



500 Albany Ave.
Hartford CT 06120
Tel: 860 249-9625
www.chshartford.org



Our Mission

To improve healthcare access and eliminate health disparities within the community, by providing quality, comprehensive, culturally-proficient, primary and preventive healthcare services with respect and dignity, regardless of socio-economic status, with emphasis on the underserved and the uninsured.



We'll treat
you like family



CHS is not a clinic

We are a community health center where you can bring your entire family, and receive the same close, personal care and medical expertise you'd expect from a private practice or hospital. We offer standard, same day and walk-in appointments for your convenience. We also offer an on-call phone service available 24hrs a day, 7 days a week.

CHS is open Monday through Thursday from 8:30 am to 5:30 pm, Friday from 12:30 pm to 5:30 pm and Saturday from 9:00 am to 1:00 pm.



Our Values



We believe our staff should never stop training and our health center systems should never stop improving. You deserve the latest knowledge and technology.



We work hard to create a safe, accessible health center for patients and staff, free of discrimination.



We believe everyone has the right to respectful, considerate health care of the highest quality.



Our entire health-care team is committed to providing continuous care.



Behavioral Health

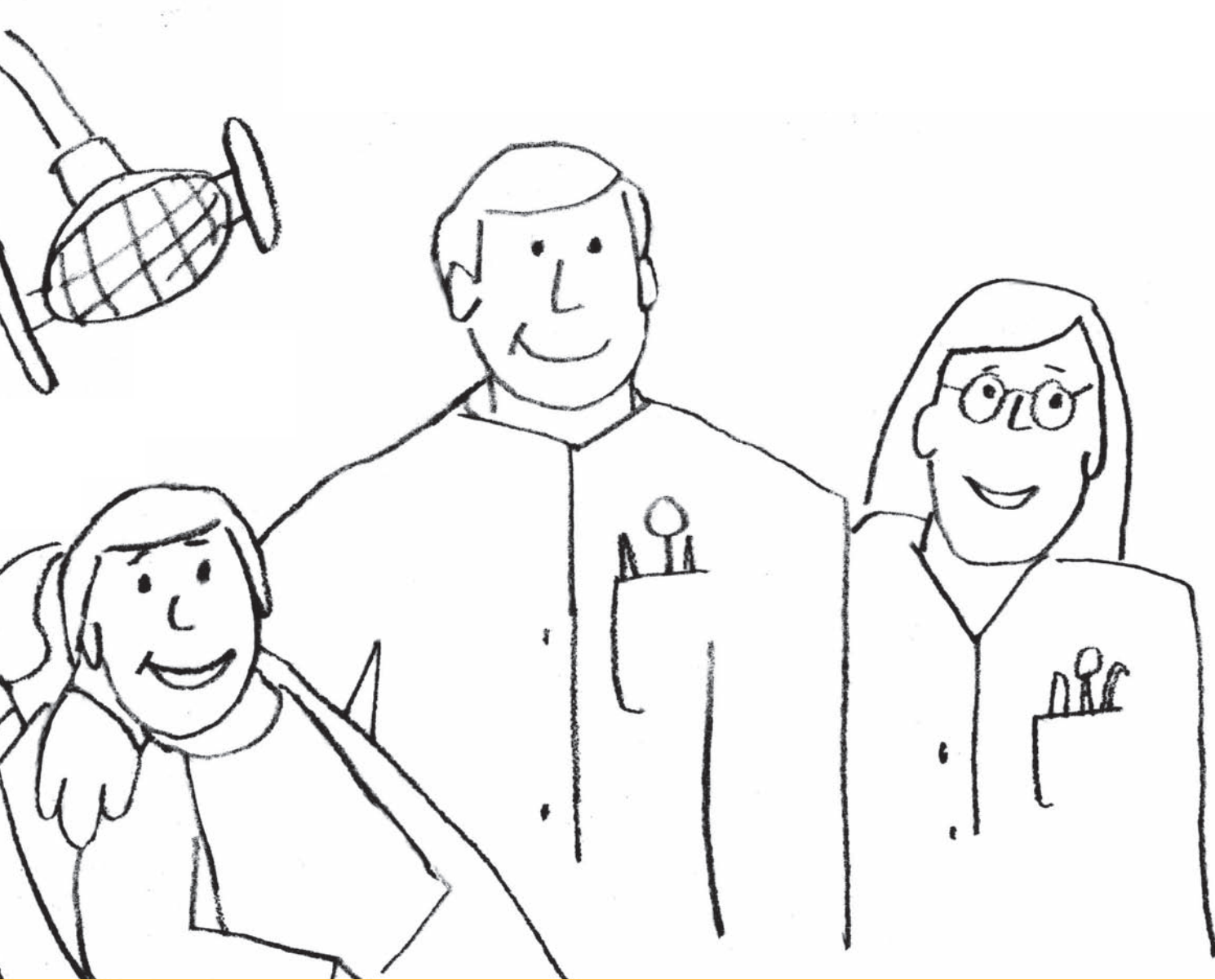
Adolescent Medicine

Pediatrics

Dental Program

Women's Health

Internal Medicine



Your smile means the world to us.

Dental Care

Our dental program is the largest of its kind in the area, with eleven chairs to keep service prompt. Our team of Dentists and Dental Hygienists speak English, Spanish and Hindi.

A dentist's job doesn't end with treating diseases of the teeth and gums, it also involves educating patients on the importance of good oral hygiene. Since oral disease can affect overall health, education is a major factor in disease prevention and in maintaining a healthy smile.

Our staff emphasizes education with children and youth, regularly visiting area schools and youth programs.

Services include:

Fluoride treatments; sealants; cleanings; fillings; extractions; crowns; bridges; dentures and partials; dental education; referrals for oral surgery, orthodontics (braces) or to other specialists, are available when needed.

Fluoride Treatments

Dental Cleanings

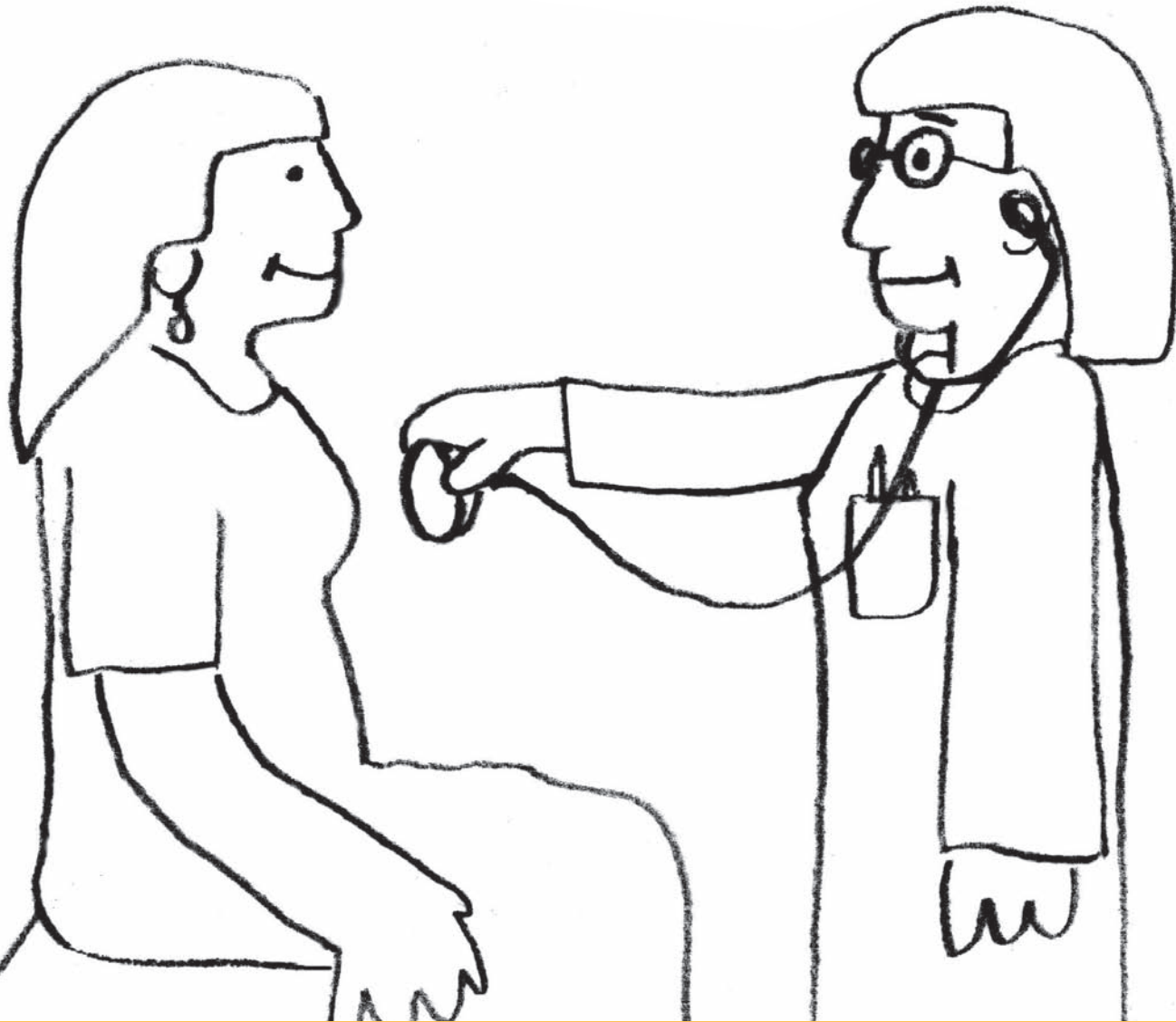
Sealants

Dental Education

Crowns

School Visits

Bridges



This is the **all** place
where **all** women
get **health care**.

Women's Health

CHS embraces a holistic approach to the life-long health and wellness of women. Our Women's Health Department provides a wider range of services than any other health center in the state. We emphasize preventive care, and all of our services are provided whether or not you have insurance. We even have special programs for free breast and pelvic exams for women who qualify. Our doctors are linked with Hartford Hospital and manage deliveries and complete follow-up on newborns. We have taken measures to reduce premature births by ensuring that high-risk patients, especially pregnant teens, receive special attention by our doctors.

Services available through CHS' Women's Health program are:

Gynecological (GYN) exams / Pap smears;
Gynecological surgery; Colposcopies; Cervical Cancer Screening; Family Planning; Pregnancy Testing; Full Prenatal and Post-partum obstetrical care including deliveries; Ultrasounds; 24 hour coverage; STD testing; Diagnostic Testing; Walk-in Services; Nutrition Counseling.

Deliveries

Pregnancy Testing

Ultrasounds

Family Planning

Cervical Cancer Screening

Healthy Children make a healthy community.



Pediatrics

Community Health Services' Department of Pediatrics provides care to children and families, starting from pregnancy and birth, through infancy and childhood, and into the teen age years. CHS' pediatricians begin caring for children before they are born, working closely with CHS' Women's Health Department to help families prepare for their newest family member. CHS pediatricians see each of our newborns and mothers within 12-24 hours of birth at Hartford Hospital and help families with important newborn decisions, coordinating the baby's nursery care, discharge and follow up. Our pediatricians and nursing staff are available to assist families with care and advice for all childhood illnesses, assist with management with chronic illnesses, such as asthma and obesity, and provide check ups and

preventive care. Our mission is to help assure that every child reaches his or her full potential.

Services include:

Immunizations, health screenings for anemia, lead poisoning and tuberculosis; child safety education including proper use of children's car safety seats, smoke detectors, bicycle helmets, and home hot water temperatures to help prevent needless childhood injuries; developmental screening; WIC Program; Reach Out and Read Program; school and sports physicals; regular care for chronic illnesses, such as asthma, seizures, diabetes, and the attention deficit disorder. For children requiring hospital care, our pediatricians admit and care for children at Connecticut Children's Medical Center and work closely with CCMC's specialists.

Immunizations

WIC Program

Health Screenings

Child Safety Education

Reach Out & Read Program



Adolescents have **their** own space to **feel** at **home.**

Adolescents

CHS understands that adolescents are much more than older kids or younger adults. Our Adolescent Medicine program is the only free-standing, comprehensive program of its kind in the City of Hartford and is specifically designed for the health needs of young people between the ages of 13 and 23. Because confidentiality is critical to adolescents accessing care, the program maintains its own location, registration and waiting room, respecting the rights of minors to receive confidential healthcare.

Services include:

CHS' Adolescent Medicine staff includes a board-certified family physician and nurse practitioner, who not only tend to physical health, but also assess individual adolescent's developmental readiness and assist youth in making the transition between pediatric and adult care. Program staff also conducts outreach to local schools, shelters, etc., educating youth about how to use the system and about the need for preventive care.

Weight Management

Sports Physicals

STD Testing

Pregnancy Testing

School Physicals

Pap Smears

We give the **community** a nurturing place to get **healthy**.



Internal Medicine

Our Internal Medicine department provides services for both acute and chronic illnesses. You'll find Physicians, Nurse Practitioners, Nursing and support staff, ready to assist.

We take a holistic approach to care: learning about all facets of the patient's life, how they affect health, and how they interact.

Services include:

Primary care and follow-up of acute and chronic health care problems. Infectious Diseases consultations. A comprehensive HIV/AIDS program for disease treatment and primary care for patients with HIV/AIDS. Hepatitis B & C treatment and follow-up, and a support group for patients with Hepatitis C. Treatment and follow-up of STDs; Tuberculosis treatment and prevention. Case Management and education for diabetes, heart disease, hypertension and other health issues. CHS also participates in a National Diabetes Collaborative that provides multidisciplinary care, with a team from the health center's medical, dental, eye care and podiatry programs. The program provides a Diabetes Teaching Session once a month.

Podiatry

Foot problems are among the most common of all health problems. Often foot problems are a direct result of a lifetime of abuse and neglect. Some serious foot problems can be cured or at least managed, but they often go untreated because people believe mistakenly that discomfort and pain are normal. Here, at CHS we encourage regular foot examinations. That is why we have a licensed Podiatrist with staff privileges at St. Francis Hospital and Medical Center.

Services include:

CHS provides full general, surgical and trauma foot care. We work with children from birth through their teen years. We have prevention services for those who have neuropathy or who may suffer from diabetes, alcohol related, HIV, Sickle cell or circulation problems. We believe in Lower Extremity Amputation Prevention working with infections and wound care. We have at CHS a brace maker, stocking fitter and orthopedic shoe fitter. Necessary surgery is available for bunion and hammer toe correction, tendon lengthening, flatfoot and high arch correction, nerve entrapments, major foot fusions and amputations. At CHS we believe you should "put your feet in our hands."



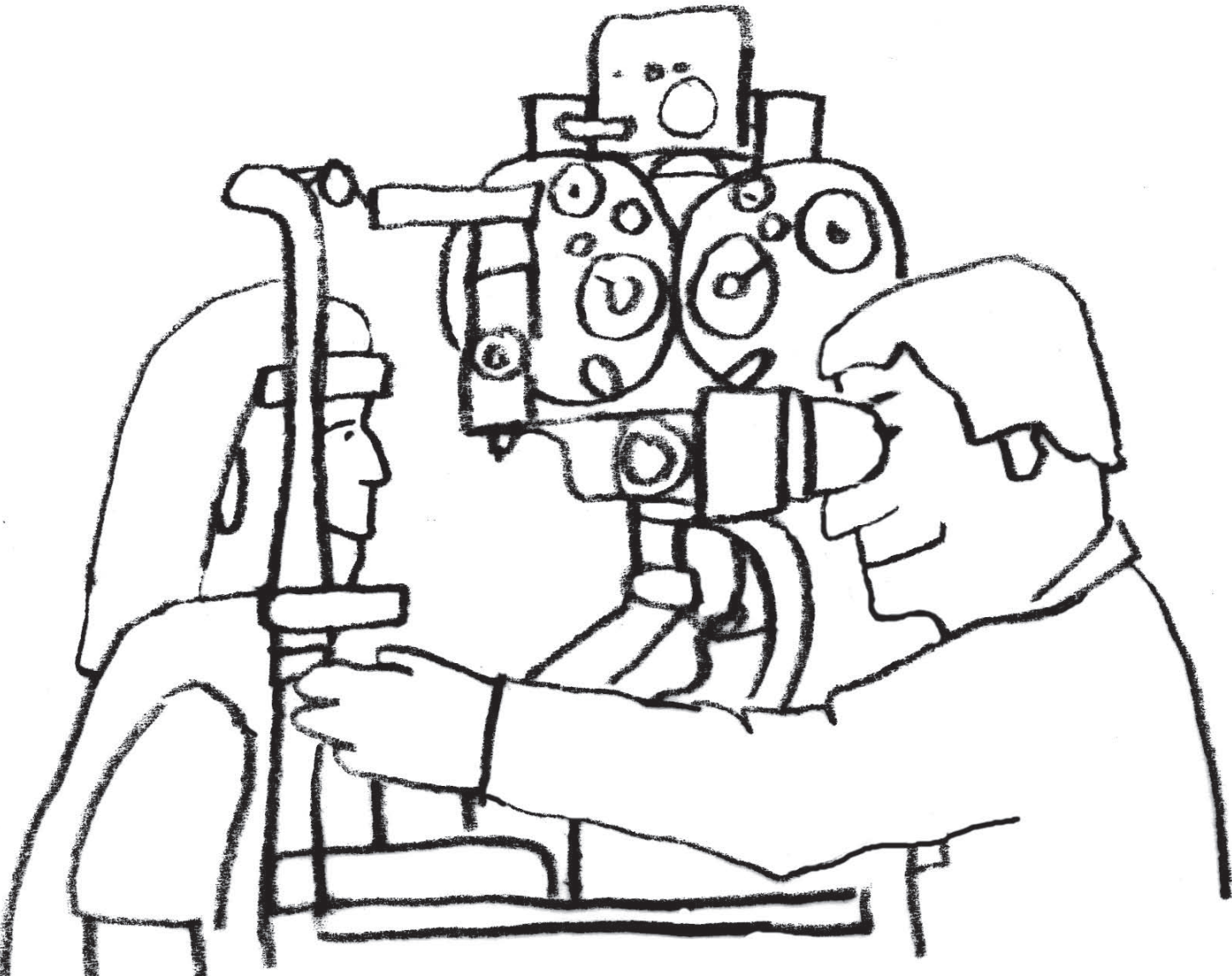
HIV/AIDS Program

Diabetes Education

Orthotics

Wellness Care

Neuropathic Prevention



Our vision is to improve yours.

Vision care is critical, especially since it can reveal problems such as diabetes — a disease that can be devastating to both adults and children.

Our new program, launched in November, 2004, treats the whole family.

Every Thursday, our certified Optometrist sees patients by appointment for general eye care. We refer cases needing specific expertise to specialists.

The CHS Vision Care Program provides complete optometry services, including refraction, vision testing, tonometry exams to identify glaucoma and related conditions, as well as complete fundoscopic examinations.

In May 2007, as a unique complement to its Vision Care Program CHS began providing prescription eyeglasses for our patients! Patients can have their eyeglasses within 2 days of receiving their prescription — versus having to wait for at least a week for their prescription glasses from other local vendors (Lens Crafters, Wal-Mart, etc). Uninsured or under-insured patients of CHS' Vision Care Program have the opportunity to receive free prescription eyeglasses. CHS will also give the patient the option of upgrading their frames, at their discretion. In this case, CHS will pay the initial \$20 and the patient will be billed for the difference. There are nearly 150 frame options, including children's frames.

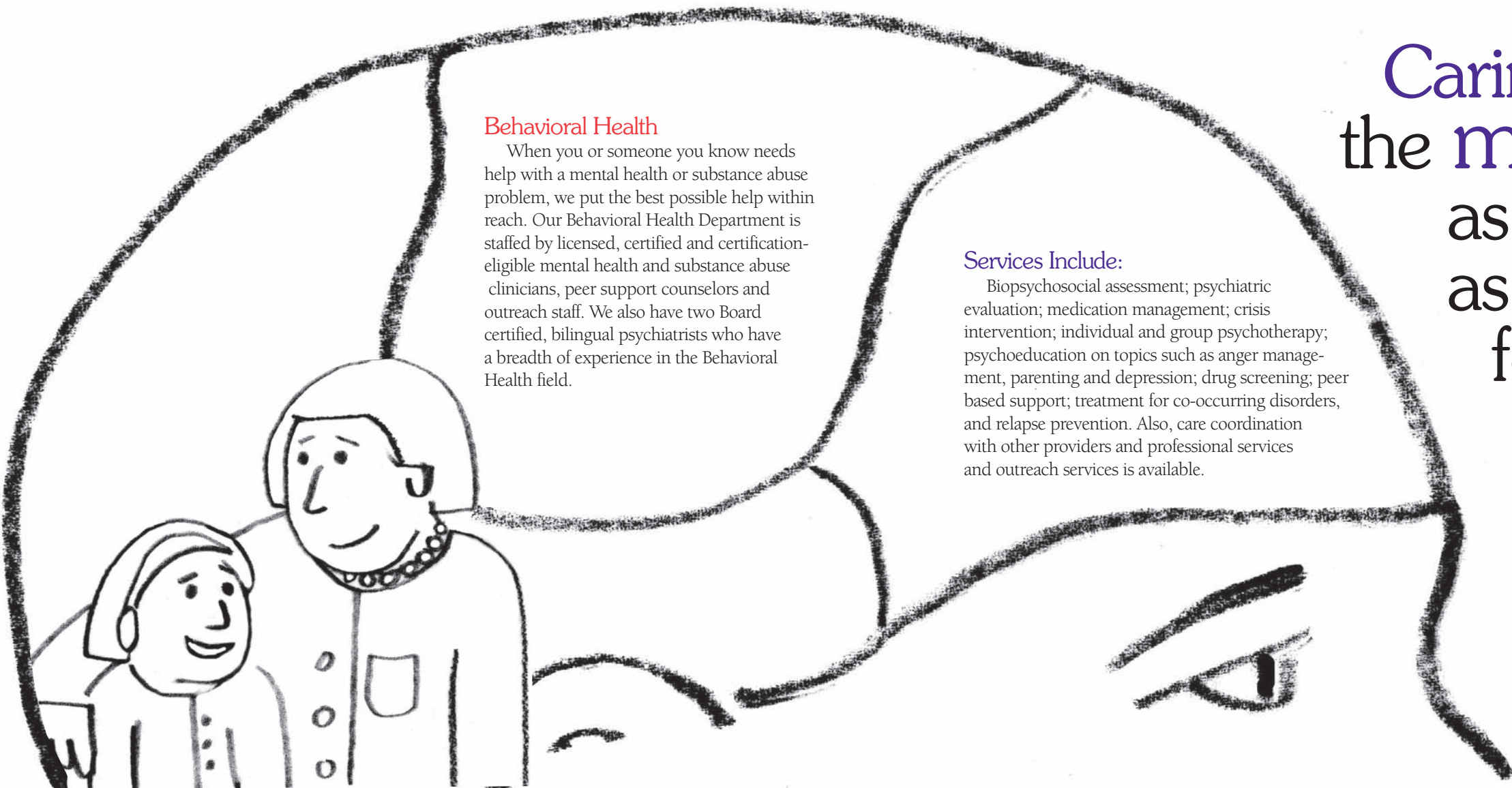
Certified Optometrist

Whole Family Eye Care

Diagnosis of Eye Diseases

Vision Testing

Glasses



Caring for
the mind is
as crucial
as caring
for the
body.

Behavioral Health

When you or someone you know needs help with a mental health or substance abuse problem, we put the best possible help within reach. Our Behavioral Health Department is staffed by licensed, certified and certification-eligible mental health and substance abuse clinicians, peer support counselors and outreach staff. We also have two Board certified, bilingual psychiatrists who have a breadth of experience in the Behavioral Health field.

Services Include:

Biopsychosocial assessment; psychiatric evaluation; medication management; crisis intervention; individual and group psychotherapy; psychoeducation on topics such as anger management, parenting and depression; drug screening; peer based support; treatment for co-occurring disorders, and relapse prevention. Also, care coordination with other providers and professional services and outreach services is available.

Peer Counseling

Psychiatric Evaluations

Co-Occurring Disorders

Anger Management

Mi govoriamo
bosanski

माडे रेठ पंजाबी घेरु
उरटर उयलघर वै।

Parle italiano

Nous parlons français

Nou palé creole

YE KA TWI

Ne flasim shqip

یہاں اُردو بولنے والے ڈاکٹر

Hablamos español

موجود ہیں

यहा हिन्दी बोलने वाली डाक्टर है।

Kami po ay ngsasalita ng Pilipino/Tagalog

Our staff cares in
many
languages.

If you don't find the language you need here,
ask about our Translation Services.

As a community health center, we're committed
to speaking the languages of the neighbors we serve.

Spanish Hindi Haitian Creole Turkish Thai German Russian French Urdu Punjabi



No food. No insurance.
No heat. No wheels.

We say “yes” to solving
everyday problems.

Every Friday, CHS opens up its Food Pantry, and more than 200 families in need find nutritious groceries.

CHS provides outreach services, such as patient education and health screenings at local health fairs and community events. We also provide outreach and inhouse services to migrant farm workers.

We're here for the uninsured, helping patients apply for Medicaid and the HUSKY program. We link eligible mothers with WIC, for assistance.

We also refer people to our contacts for energy and employment assistance.



If you live in the Hartford area, make an appointment for our pick-up and drop-off service at (860) 808-8799.

While you're here, we have a full-service pharmacy and medical lab right on site, so you can get more done in one trip.

Farm Workers Food Pantry HUSKY Enrollment

Energy Assistance Full Service Pharmacy Medical Lab



Understanding your financial health is one more way we care.

The quality of your care is never determined by the size of your bankbook.

We'll work with you, based on your ability to pay. We'll help you determine if you qualify for any insurance benefits. Our fees are on a sliding scale, so you pay what you realistically can afford.

We accept most insurances, Medicaid and Medicare. For those patients without insurance, the health center works with each individual, and individual family, based on their income and family size.

At our center, you'll have access to the Center for Children's Advocacy's Medical-Legal Partnership Project (MLPP), which provides proactive legal assistance in a healthcare setting. The MLPP represents children and their families in matters relating to housing, disability rights and benefits, public benefits and entitlements, Medicaid advocacy and immigration.

Managing all the aspects of your care is a big part of our job. We're dedicated to getting you the right help, right when you need it.

Sliding Scale

Proactive Legal Assistance

Affordable Care

Insurance Benefits